

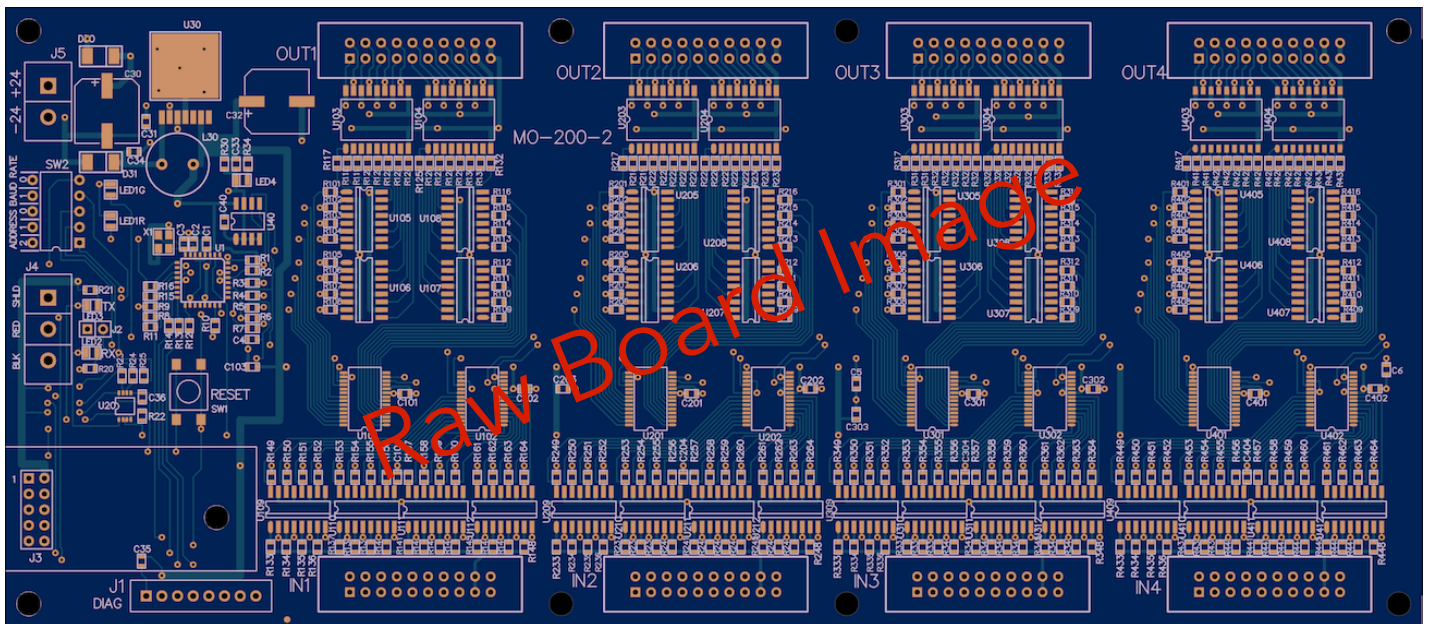


Description:

- ▶ Provides 64 each Digital optically isolated Inputs and optically isolated high current Outputs, controlled/monitored via RS-485 Modbus RTU serial port.

Features:

- ▶ 4 each, color coded Inputs (black) and Outputs (white) – Sinking wiring configuration – 20 pin ribbon cable headers for use with VT-241, VT-242, VT-243, and VT-244 breakout / termination boards.
- ▶ High-current (500 ma each, 2.5A max per group of 8) outputs with Clamp Diodes for direct termination to coil loads (relays).
- ▶ Dip Switch selectable RTU addresses 1-8.
- ▶ Dip Switch selectable Baud rates 9600, 19200, 115200, and 230400.
- ▶ Auto-Output-Disable after polling inactivity of 5 seconds or more.
- ▶ Serial RS-485 termination jumper.
- ▶ Ethernet enabled in combination with VT-280 module.
- ▶ Field updatable firmware.
- ▶ Power presence LED (Green).
- ▶ Operational Status LEDs, Normal activity (Green), Error conditions (Red).
- ▶ Serial Transmit and Receive activity LEDs (Yellow).
- ▶ Board material: Industry standard FR4 94-V0 fire resistant self extinguishing fiberglass epoxy.
- ▶ Dimensions X:9 inches, Y: 3.95 inches.
- ▶ Designed for optional Wago 288-600 DIN rail mounting tray.
- ▶ #6 Stud mounting holes





MODBUS support based on the following specifications; (Linked below, and attached for convenience)

- [MODBUS over Serial Line Specification and Implementation V1.02](#)
- [MODBUS Applications Protocol Specification V1.1b3](#)

Supported MODBUS Function codes;

Input functions

- Read Discrete Inputs (2)
 - Inputs - (0-64)
- Read Input Registers (4)
 - Register 0 = Inputs (0-16)
 - Register 1 = Inputs (17-32)
 - Register 2 = Inputs (33-48)
 - Register 3 = Inputs (49-64)

Output functions

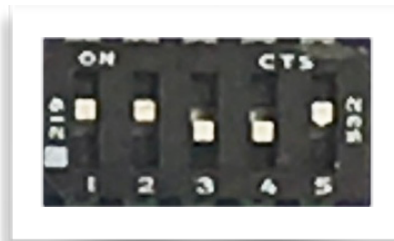
- Write Single Coil (5)
 - Outputs (0-64)
- Write Single Register (6)
 - Register 0 = Outputs (0-16)
 - Register 1 = Outputs (17-32)
 - Register 2 = Outputs (33-48)
 - Register 3 = Outputs (49-64)
- Write Multiple Registers (16)
 - Register 0 = Outputs (0-16)
 - Register 1 = Outputs (17-32)
 - Register 2 = Outputs (33-48)
 - Register 3 = Outputs (49-64)
- Read Holding Registers (3)
 - Register 0 = Outputs (0-16)
 - Register 1 = Outputs (17-32)
 - Register 2 = Outputs (33-48)
 - Register 3 = Outputs (49-64)

Miscellaneous

- Read Exception Status (7)
- Diagnostics (8)
 - Echo (0)
 - Restart (1)
 - Listen Only Mode "Muted" (4)
 - Clear All Counters (10)
 - Return Counter (11-18)
 - Clear overrun counter (20)
- Comm Event Counter (11)



Dip-Switch settings;



<u>Switch Function</u>	<u>RTU Address Truth Table</u>	<u>Baud Rate Truth Table</u>
1 - RTU Address - 2	Addr 1 1=Off 2=Off, 2=Off	230400 4=On, 5=On
2 - RTU Address - 1	Addr 2 1=Off, 2=Off, 2=On	115200 4=On, 5=Off
3 - RTU Address - 0	Addr 3 1=Off, 2=On, 2=Off	19200 4=Off, 5=On
4 - Baud Rate - 1	Addr 4 1=Off, 2=On, 2=On	9600 4=Off, 5=Off
5 - Baud Rate - 0	Addr 5 1=On, 2=Off, 2=Off	
	Addr 6 1=On, 2=Off, 2=On	
	Addr 7 1=On, 2=On, 2=Off	
	Addr 8 1=On, 2=On, 2=On	



Wago DIN rail mounting detail;

- ▶ 288-600: Carrier tray
- ▶ 288-601: Lateral end cap
- ▶ 288-602: Carrier tray DIN rail feet
- ▶ 210-533: Lateral end cap screws

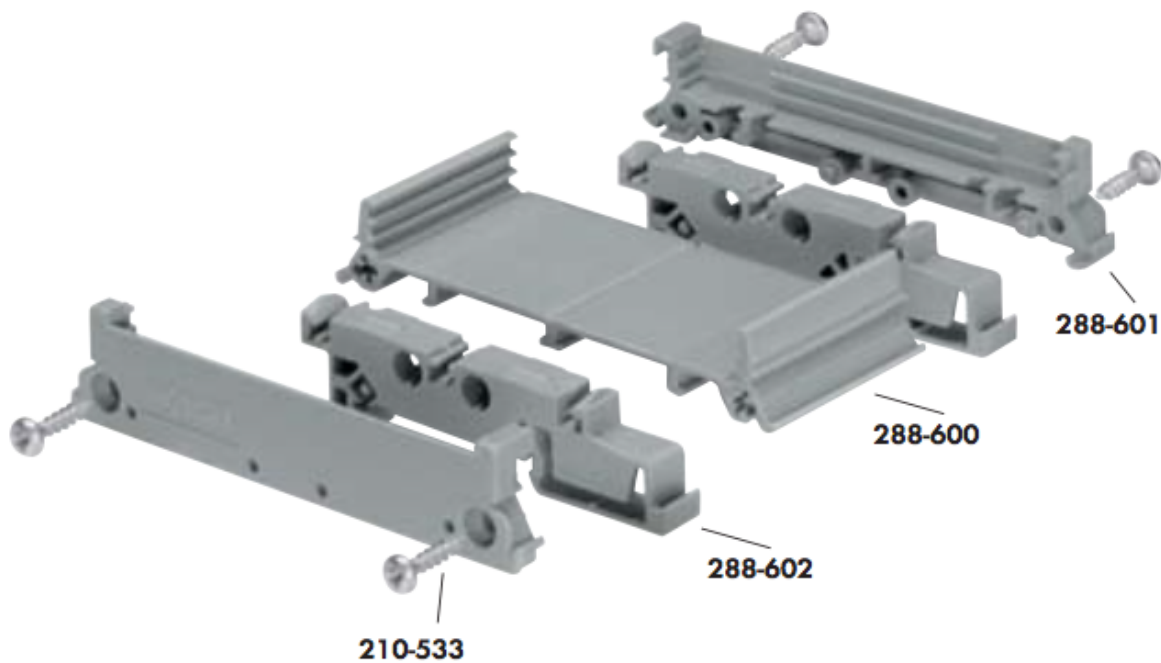


Image shown for reference only, Copyright (C) Wago