

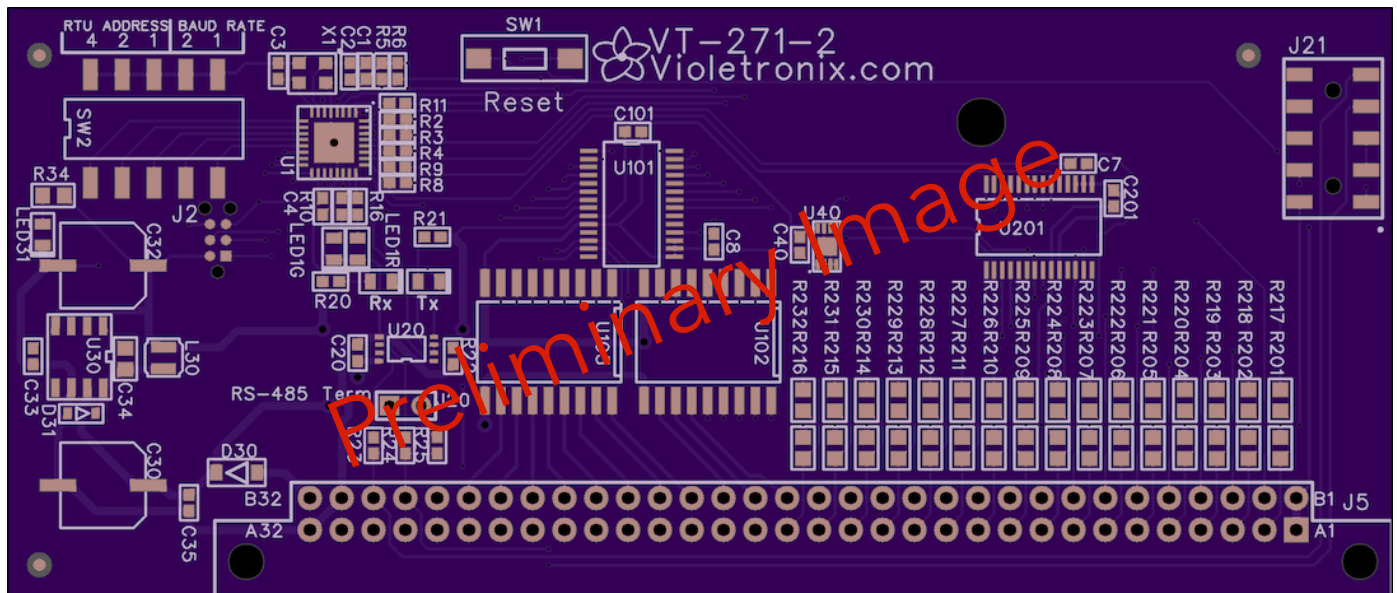


Description:

- ▶ Monitors 16 Inputs and controls 16 Outputs via Serial RS-485

Features:

- ▶ Protocol support
 - MODBUS RTU
 - Custom - Inquiries welcome
- ▶ Serial RS-485 termination jumper.
- ▶ Ethernet enabled in combination with VT-280 module.
- ▶ High-current (500 ma each, 2.5A max per group of 8) outputs with Clamp Diodes for direct termination to coil loads (relays).
- ▶ Dip Switch selectable addresses 1-8.
- ▶ Dip Switch selectable Baud rates 9600, 19200, 115200, and 230400.
- ▶ Auto-Output-Disable after polling inactivity of 5 seconds or more.
- ▶ Plugs into Wiring Termination board VT-311.
- ▶ Power presence LED (Green).
- ▶ Operational Status LEDs, Normal activity (Green), Error conditions (Red).
- ▶ Serial Transmit and Receive activity LEDs (Yellow).
- ▶ Board material: Industry standard FR4 94-V0 fire resistant self extinguishing fiberglass epoxy.
- ▶ Dimensions X:4.36 inches, Y: 1.86 inches.





MODBUS support based on the following specifications; (Linked below, and attached for convenience)

- [MODBUS over Serial Line Specification and Implementation V1.02](#)
- [MODBUS Applications Protocol Specification V1.1b3](#)

Supported MODBUS Function codes;

Input functions

- Read Discrete Inputs (2)
- Read Input Registers (4)

Output functions

- Write Single Coil (5)
- Write Single Register (6)
- Write Multiple Registers (16)
- Read Holding Registers (3)

Miscellaneous

- Read Exception Status (7)
- Diagnostics (8)
 - Echo (0)
 - Restart (1)
 - Listen Only Mode "Muted" (4)
 - Clear All Counters (10)
 - Return Counter (11-18)
 - Clear overrun counter (20)
- Comm Event Counter (11)
- Encapsulated Interface Transport (43)
 - Read Device Identification MEI (14)
 - Basic Device Identification (1)
 - Object (0) - Vendor Name
 - Object (1) - Product Code
 - Object (2) - Major Minor Revision